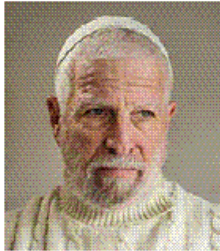


The Zionist Organization of America
San Diego Chapter
invites you to a special presentation



Phantom Nation: Inventing the "Palestinians" as the Obstacle to Peace

by

Sha'i ben Tekoa

Zionist Radio Commentator

Sha'i ben Tekoa is a strong Zionist in the Nationalist camp. His popular radio show, *Deprogram Program*, in which he debunks Arab lies and misleading language, has been on Arutz Sheva / Israel National News for many years. It is now provided on his own website, <http://www.deprogramprogram.com/>

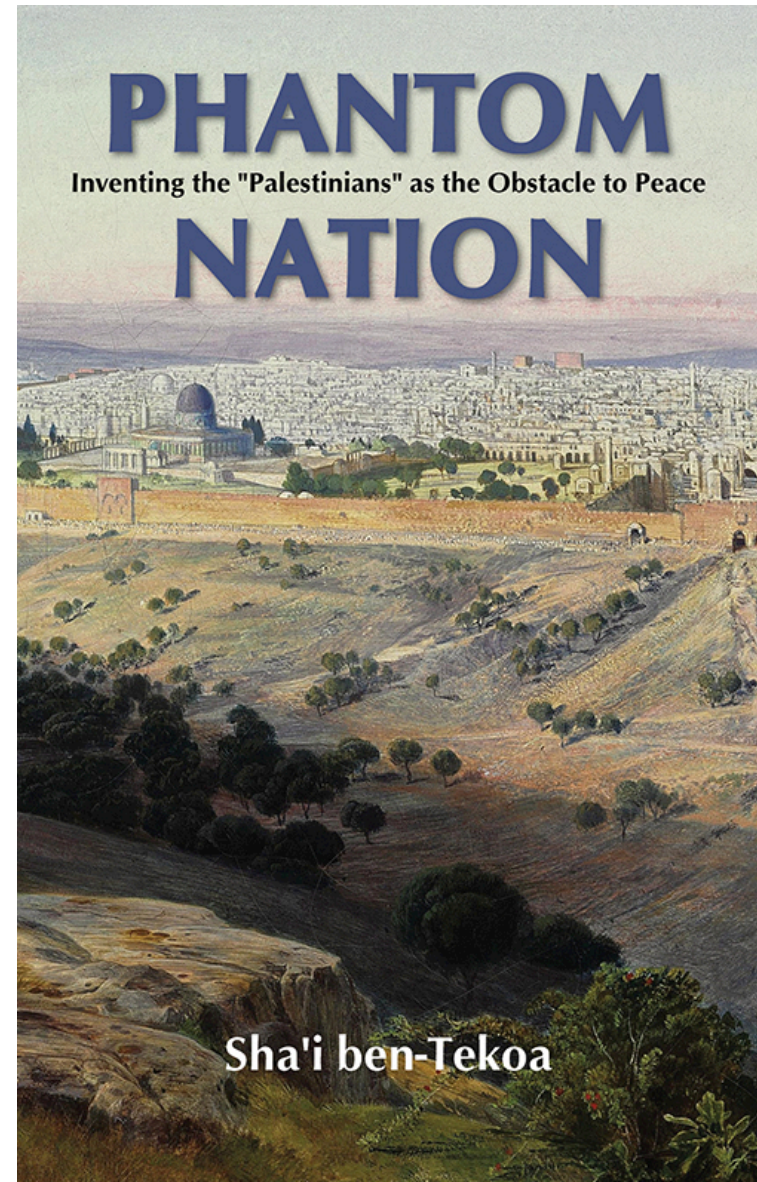
He views Palestinian nationalism as a successor to Nazism and notes that the Palestinians have turned down opportunities for a state because that's not what they want.

He wrote the three-volume *Phantom Nation: Inventing the "Palestinians" as the Obstacle to Peace*, sold through Amazon.

Tuesday, April 12, 2016, 7:30 p.m. at

Chabad Center of University City, 3813 Governor Dr., San Diego
(cor. Radcliffe, nr. SW cor. Governor & Genesee)

No charge. Info: www.sdzoa.org, sandiego@zoa.org, 858/546-1361



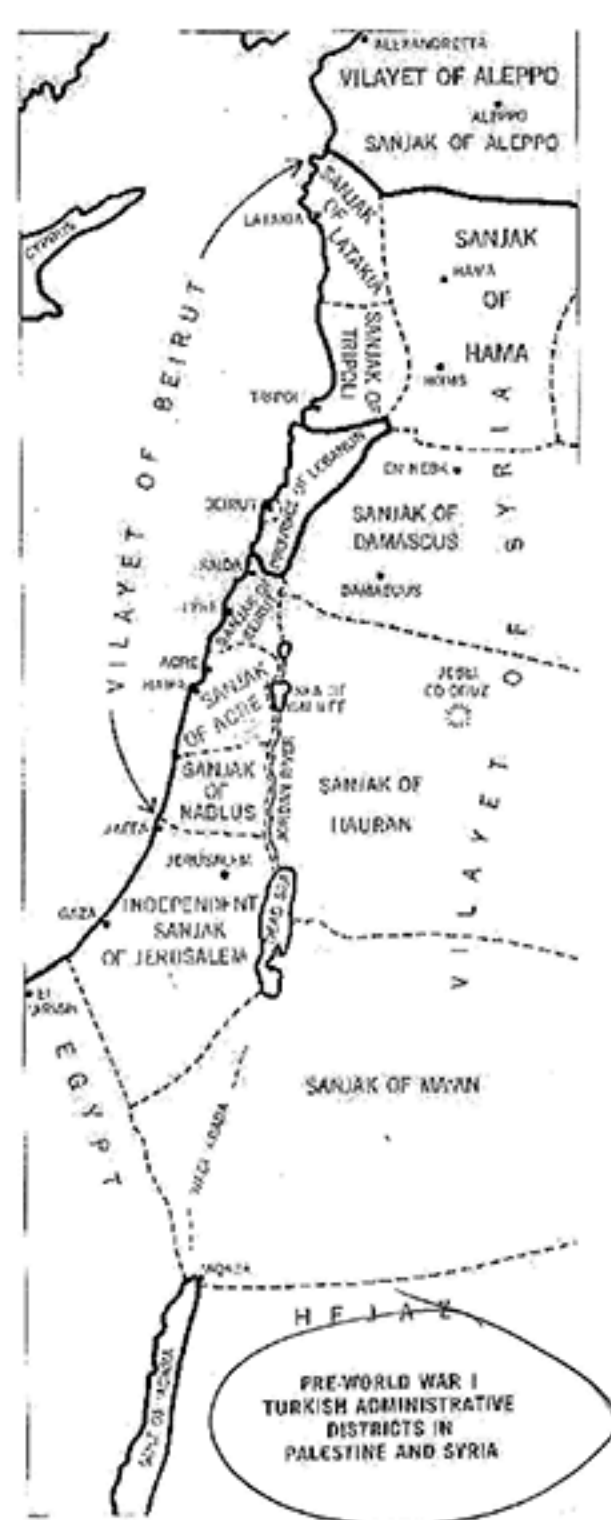
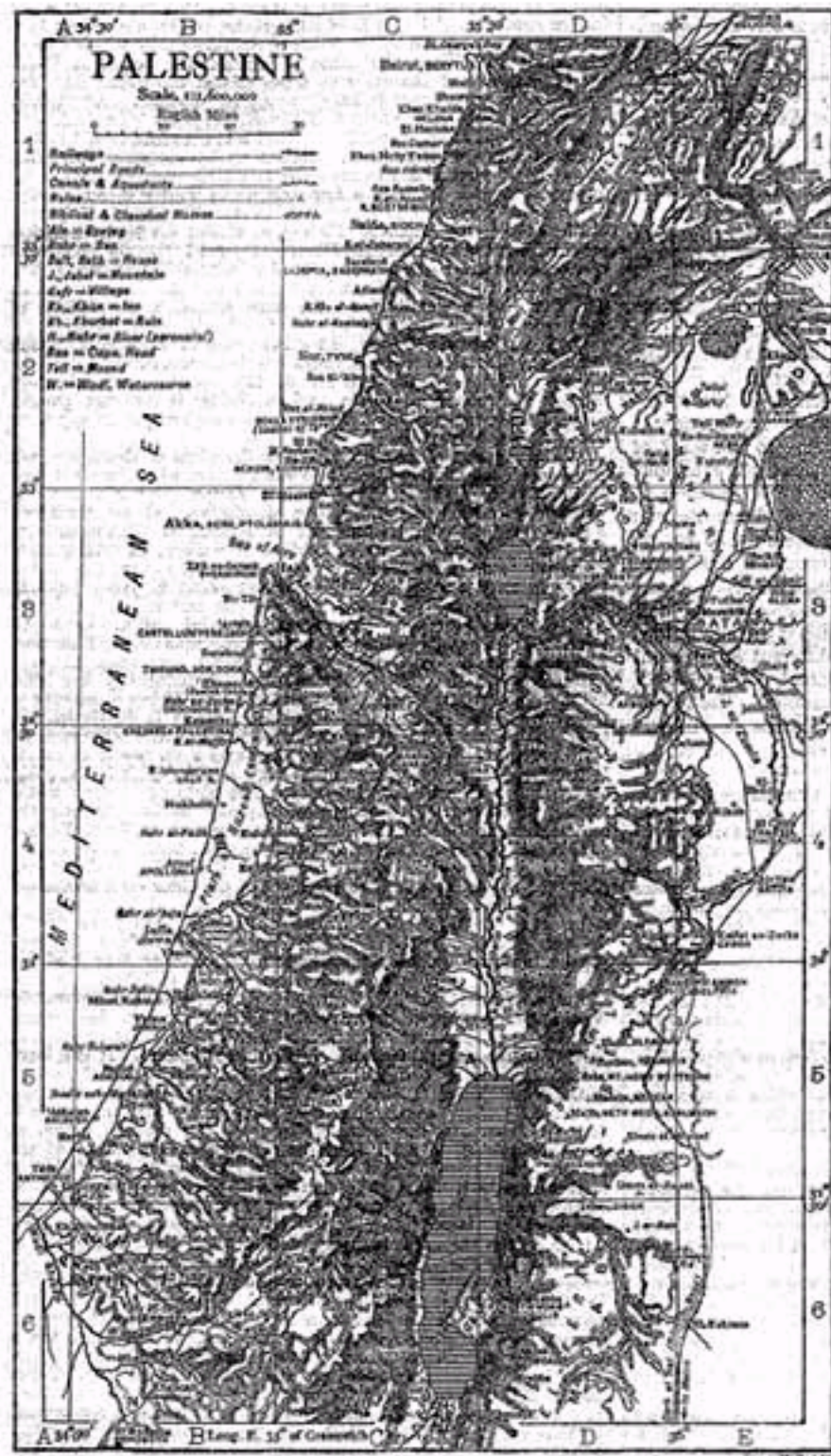




Figure 6 - Enciclopedia Universal Ilustrada, Barcelona, 1907

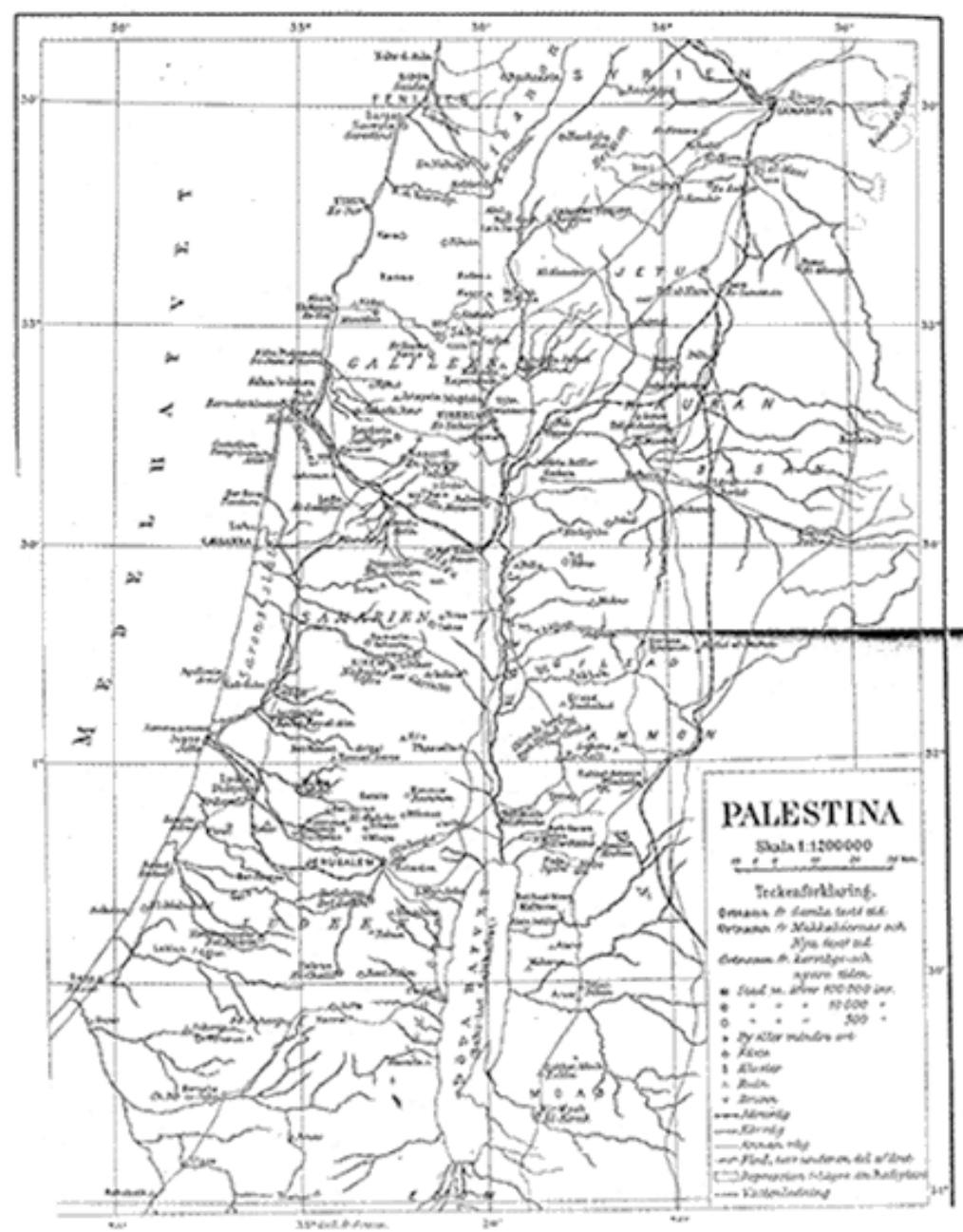


Figure 7 - Nordisk Familjebok, Stockholm, 1914



Figure 8 - Svensk Uppslagsbok, Malmö, 1957



Figure 9 - Turkish Map, 1968

THE
HISTORICAL GEOGRAPHY

OF THE
HOLY LAND

ESPECIALLY IN RELATION TO THE HISTORY
OF ISRAEL AND OF THE EARLY CHURCH

BY
GEORGE ADAM SMITH, D.D.

PROFESSOR OF HEBREW AND OLD TESTAMENT EXEGESIS
FREE CHURCH COLLEGE, GLASGOW

WITH SIX MAPS

SEVENTH EDITION

NEW YORK
A. C. ARMSTRONG AND SON
3 AND 5 WEST 18TH STREET
LONDON: HODDER AND STOUGHTON

1901

CONTENTS

	PAGE
PREFACE,	vii
LIST OF PLATES,	xxiv
CHRONOLOGICAL TABLE,	xxv
LIST OF ABBREVIATIONS, ETC.,	xxvii

BOOK I.—THE LAND AS A WHOLE

CHAP.

I. THE PLACE OF SYRIA IN THE WORLD'S HISTORY,	I
1. The Relation of Syria to Arabia,	7
2. The Relation of Syria to the Three Continents,	11
3. Syria's Opportunity Westward,	21
4. The Religion of Syria,	28
II. THE FORM OF THE LAND AND ITS HISTORICAL CON- SEQUENCES,	43
III. THE CLIMATE AND FERTILITY OF THE LAND, WITH THEIR EFFECTS ON ITS RELIGION,	61
1. The Climate,	61
2. The Fertility,	76
IV. THE SCENERY OF THE LAND, WITH ITS REFLECTION IN THE POETRY OF THE OLD TESTAMENT,	90
V. THE LAND AND QUESTIONS OF FAITH,	105
VI. THE VIEW FROM MOUNT EBAL,	117
	xxi

BOOK II.—WESTERN PALESTINE

CHAP.	PAGE
VII. THE COAST,	125
VIII. THE MARITIME PLAIN,	145
IX. THE PHILISTINES AND THEIR CITIES,	167
X. THE SHEPHELAH,	199
XI. EARLY CHRISTIANITY IN THE SHEPHELAH,	237
XII. JUDÆA AND SAMARIA—THE HISTORY OF THEIR FRONTIER,	245
XIII. THE BORDERS AND BULWARKS OF JUDÆA,	257
1. East : The Great Gulf with Jericho and Engedi—The Entrance of Israel,	261
2. The Southern Border : The Negeb,	278
3. The Western Border : The Defiles,	286
4. The Northern Border : The Fortresses of Benjamin,	289
XIV. AN ESTIMATE OF THE REAL STRENGTH OF JUDÆA,	295
XV. THE CHARACTER OF JUDÆA,	303
XVI. SAMARIA,	321
XVII. THE STRONG PLACES OF SAMARIA,	343
XVIII. THE QUESTION OF SYCHAR,	365
XIX. ESDRAELON,	377
XX. GALILEE,	411
XXI. THE LAKE OF GALILEE,	437
XXII. THE JORDAN VALLEY,	465
XXIII. THE DEAD SEA,	497

BOOK III.—EASTERN PALESTINE

CHAP.	PAGE
XXIV. OVER JORDAN : GENERAL FEATURES,	517
XXV. THE NAMES AND DIVISIONS OF EASTERN PALESTINE,	531
1. The Three Natural Divisions,	534
2. The Political Names and Divisions To-day,	535
3. In the Greek Times : the Time of Our Lord,	538
4. Under the Old Testament,	548
XXVI. MOAB AND THE COMING OF ISRAEL,	555
XXVII. ISRAEL IN GILEAD AND BASHAN,	573
XXVIII. GREECE OVER JORDAN : THE DECAPOLIS,	593
XXIX. HAURAN AND ITS CITIES,	609
XXX. DAMASCUS,	639

APPENDICES

I. SOME GEOGRAPHICAL PASSAGES AND TERMS OF THE OLD TESTAMENT,	651
II. STADE'S THEORY OF ISRAEL'S INVASION OF WESTERN PALESTINE,	659
III. THE WARS AGAINST SIHON AND OG,	662
IV. THE BIBLIOGRAPHY OF EASTERN PALESTINE,	665
V. ROADS AND WHEELED VEHICLES IN SYRIA,	667
INDEX OF SUBJECTS,	683
INDEX OF AUTHORITIES,	698
INDEX OF SCRIPTURE REFERENCES,	703